

## CALC series Pneumatic Leverage Clamp



### ORDERING INDICATION :

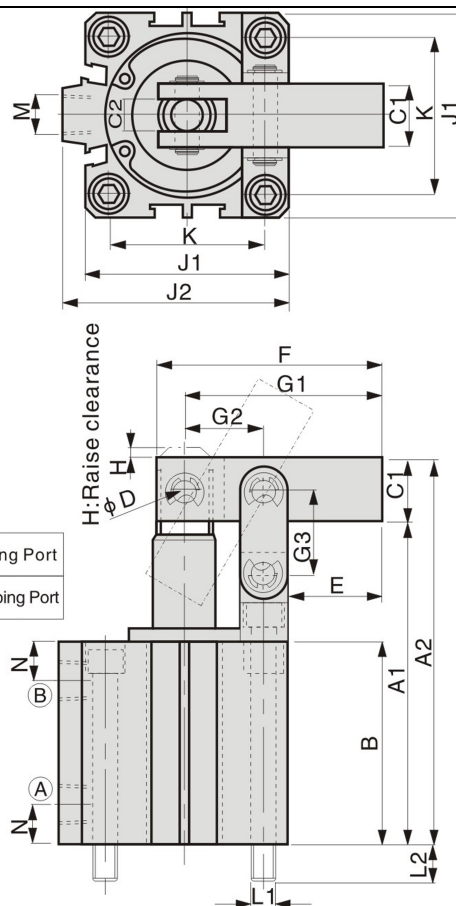
CALC - MS 32 S1

CALC	Series	CALC
MS	Blank	Standard type
	MS	With magnetic induction
32	Cylinder inside diameter	$\phi 25, \phi 32, \phi 40, \phi 50$ $\phi 63, \phi 80, \phi 100$
S1	Sensor switch	1Pcs of S1, 2Pcs of S2

Max. operating pressure 7 bares

Min. operating pressure 1 bar

Double Acting



Note :

When you need to increase the length of the clamping arm, please don't exceed 1.5 times of the original length.

### Features :

Applied Standardized fixture cylinder in this series of product, and fitted with lever type holding structure. Piston push out for clamping. Main spare parts of this product be installed outside of the body for convenient maintenance. The material of body is aluminum alloy. The surface of internal is smooth, and have long service life. Clamping spare parts material is carbon steel which used for mechanical configuration, firm and wear-resistance. All models of this series equipped with magnetic induction are available.

MODEL	CLAMPING FORCE AT 7 bar (KN)	CLAMPING STROKE (mm)	TOTAL STROKE (mm)	CYLINDER CAPACITY CLAMP (cm <sup>3</sup> )	CYLINDER CAPACITY UNCLAMP (cm <sup>3</sup> )	EFF. PISTON AREA CLAMP (cm <sup>2</sup> )	EFF. PISTON AREA UNCLAMP (cm <sup>2</sup> )	RANGE OF TEMPERATURE (°C)
CALC-25	0.20	17	20	9.82	8.24	4.91	4.12	-10~+60°C
CALC-32	0.31	20	23	18.49	15.89	8.04	6.91	-10~+60°C
CALC-40	0.56	22	25	31.40	26.40	12.56	10.56	-10~+60°C
CALC-50	0.91	27	30	58.89	49.47	19.63	16.49	-10~+60°C
CALC-63	1.69	32	35	109.06	98.00	31.16	28	-10~+60°C
CALC-80	2.79	40	43	216.03	195.22	50.24	45.4	-10~+60°C
CALC-100	4.69	45	48	376.80	50.21	78.5	10.46	-10~+60°C

Unit:mm

MODEL	STANDARD TYPE		WITH MAGNET		C1	C2	ΦD	E	F	G1	G2	G3	H	J	J1	K	L	L1	M	N	α
	A1	B	A1	B																	
CALC-25	65.5	41	75.5	51	□13	6	φ5	25	50	45	14	17	3	40	—	28	M5×0.8	10.5	M5*0.8	8	75°
CALC-32	78	49	93	64	□16	8	φ6	31	60	53	17	20	3	44	50	34	M5×0.8	11	PT1/8	9	70°
CALC-40	82.5	51.5	97.5	66.5	□16	8	φ6	32	65	58	20	22	3	52	58	40	M6×1.0	9.5	PT1/8	10	65°
CALC-50	96.6	58.6	106.6	68.6	□19	10	φ8	35	75	66	23	27	3	62	71	48	M6×1.0	11	PT1/4	11	70°
CALC-63	115.5	72.5	125.5	82.5	□22	10	φ8	38.5	85	76	29.5	32	3	75	84.5	60	M6×1.0	11	PT1/4	11	65°
CALC-80	138	84	148	94	□22	10	φ10	47	105	94	37	40	3	94	104	74	M8	15.5	PT1/4	14	65°
CALC-100	163.5	99	173.5	109	□25	12	φ12	53	125	110	45	45	3	114	124	90	M10	15	PT1/4	18	60°